



Public Workshop # 1
Project Overview

move dc DCCrosstownStudy.com **d. DC**

crosstown
MULTIMODAL TRANSPORTATION STUDY

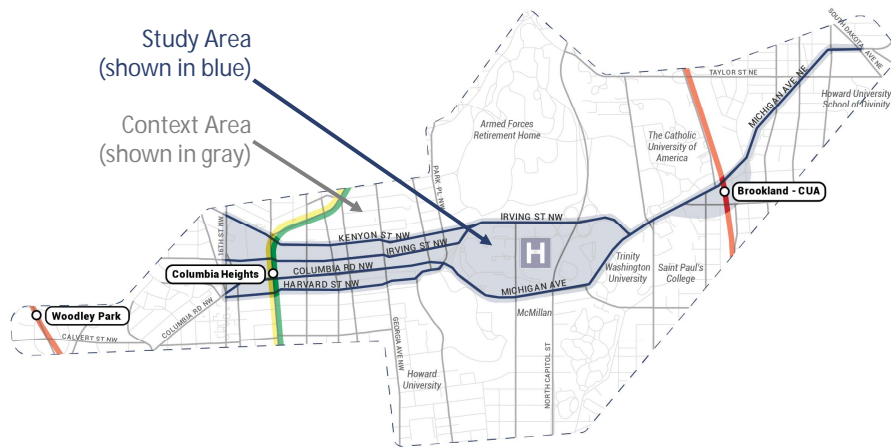
Background

- The Crosstown Multimodal Transportation Study is a recommendation from moveDC, the District of Columbia's multimodal long-range transportation plan.
- moveDC was completed in October 2014. The final plan can be reviewed at: www.wemoveDC.org
- The Crosstown Multimodal Transportation Study was identified as key project in the moveDC 2-Year Action Plan.



Study Area

- Focused on east-west corridors between Wards 1 and 5



2 of 7



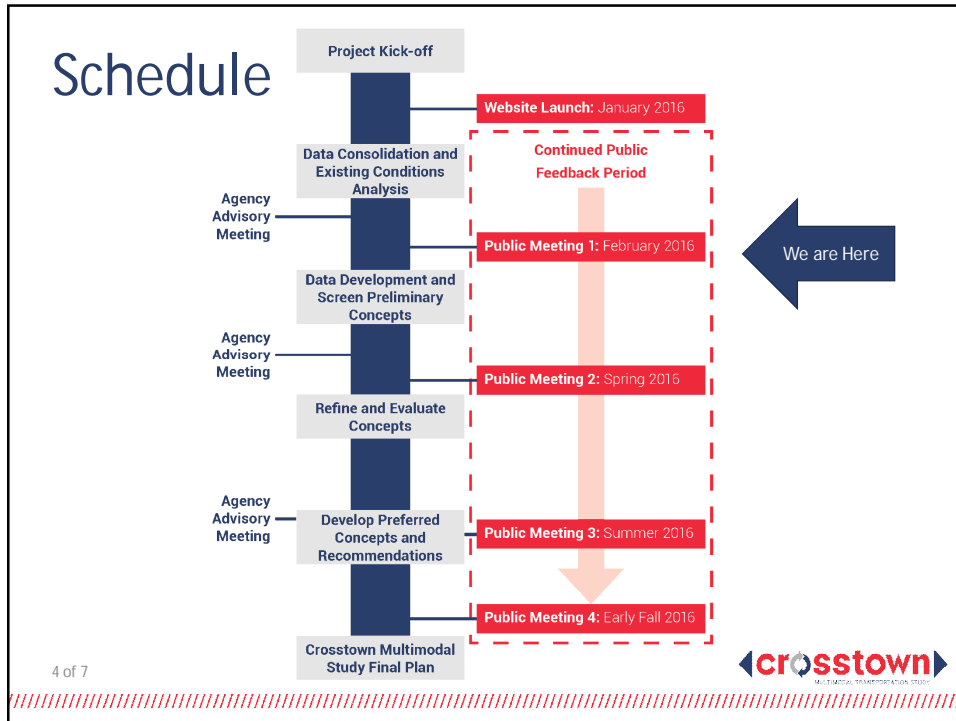
Study Purpose

- Identify improvements along the east-west connections that traverse Wards 1 and 5
- Address safety concerns
- Optimize mobility and operations
- Improve efficiency for all modes and users



3 of 7





- ## Study Progress to date
- Data Consolidation
 - Demographics
 - Major Planned Developments
 - Travel Patterns
 - Intersection Operations
 - Street Conditions
 - Volumes (vehicular, pedestrian, bicycle)
 - Parking restrictions
 - Transit routes + ridership
 - Transit boardings + alightings
 - Review of existing data points
 - Website Launch
 - DCcrosstownstudy.com
 - Stakeholder Outreach
 - Corridor institutions, universities, and developers
 - Agency Advisory Meeting
 - DDOT
 - WMATA
 - DC Office of Planning
 - Council Briefings
 - CM Nadeau (Ward 1)
 - CM McDuffie (Ward 5)
- 5 of 7
- VISION ZERO**
SAFE STREETS FOR EVERYONE
- crosstown**
MULTIMODAL TRANSPORTATION STUDY

Unique Study Area Features

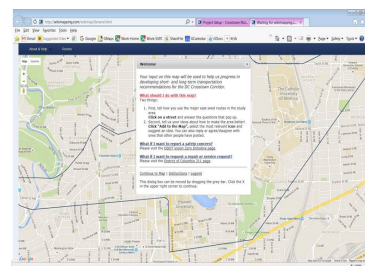
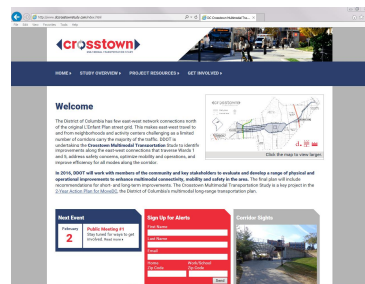
- Universities
- Medical Campuses
- Federal Institutions
- McMillan Reservoir
- Cloverleaf Interchange (North Capitol Street at Irving Street)
- Ramps west of hospital center
- Study Area Neighborhoods
 - Varying residential/employment density
 - Varying attractions for surrounding neighborhoods

6 of 7



Stay Connected

- **Project Website** – visit for meeting materials, to provide feedback, and for future public meeting dates
www.dccrosstownstudy.com
- Have ideas? Email us at:
ideas@dccrosstownstudy.com
- **Wiki Map** – Available 24/7 on website for feedback
- **DDOT Contact**– Kelly Peterson
 - Project Manager
 - 202-671-4573
 - Kelly.Peterson@dc.gov



7 of 7

